



Learning Beyond High School Builds Wisconsin Talent



Moving Wisconsin to a postsecondary education attainment rate of 60% by 2027

Wisconsin's population is aging. With a wave of retirements and fewer high school graduates, the state faces an urgent and growing need for talent.

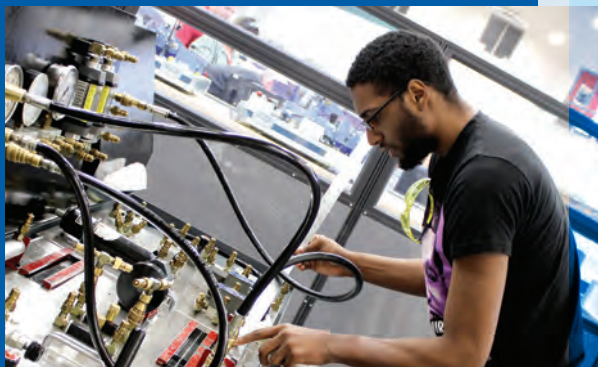
To meet that need, many more people must continue their learning beyond high school, earning college degrees, diplomas or certificates, or completing a registered apprenticeship.

Wisconsin's higher education systems – the Wisconsin Technical College System (WTCS), the University of Wisconsin (UW) System, and the Wisconsin Association of Independent Colleges and Universities (WAICU) – are collaborating to ensure those between the ages of 25 and 64 have every opportunity to earn those high-value education credentials. Of particular interest to the partners is ensuring these opportunities are equally accessible to all prospective students, including first-generation college students and people of color.

With support from the Lumina Foundation, and joined by industry and other partners, we will strive to increase the number of high school graduates who continue their education beyond high school. In Wisconsin, this post-high school (postsecondary) attainment rate is currently about 48 percent. This rate is tied to key economic indicators, including workforce participation and individual earnings.

Together, we will help Wisconsin achieve a postsecondary attainment rate of 60 percent by 2027 ... 60 Forward.





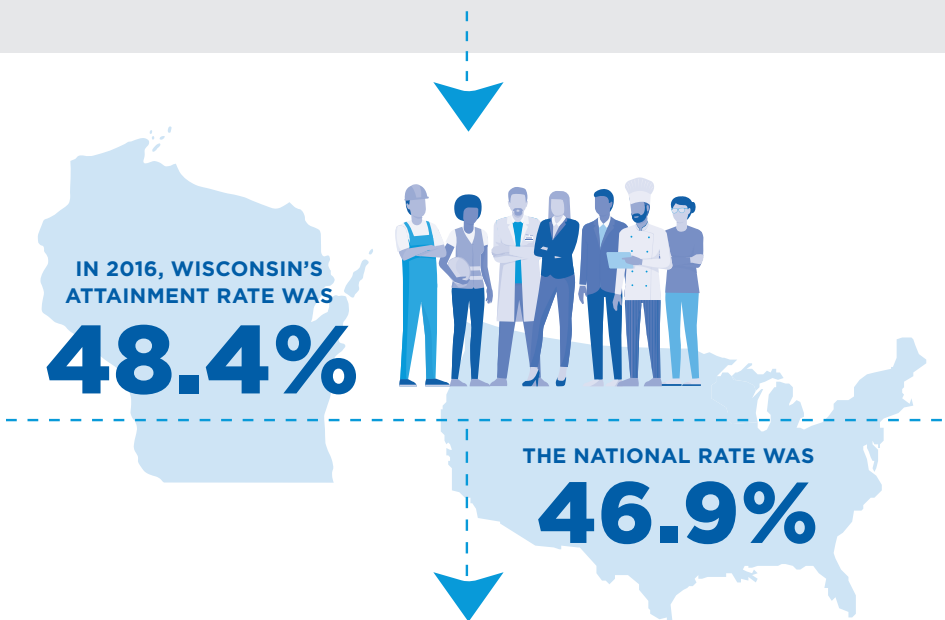
Value of a Statewide Goal

- Sets a common objective for state and local education, workforce, and economic development partners, as well as policymakers
- Addresses the talent gap by better connecting education and the workforce, with a focus on high demand sectors
- Establishes benchmarks and is data driven, allowing regional and national comparisons and trend analyses



A higher “attainment rate” – the proportion of those aged 25 to 64 with an education credential beyond high school – is tied to greater labor force participation and increased earnings. Given Wisconsin’s demographic challenges, the topic has perhaps never been more important.

In 2016, the most recent year for which data are available, Wisconsin’s attainment rate was 48.4 percent. While that was above the national rate of 46.9 percent, it is well short of labor economists’ estimates that 60 percent of all jobs will require a high-quality postsecondary credential by the end of this decade.



LABOR ECONOMISTS ESTIMATE THAT

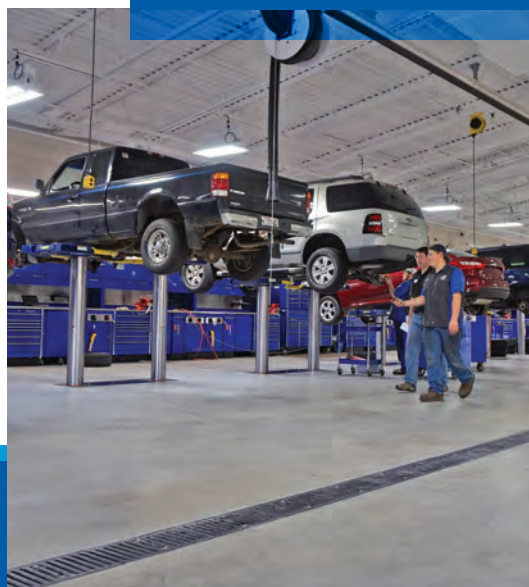
**60% OF ALL JOBS
WILL REQUIRE A HIGH-QUALITY
POSTSECONDARY CREDENTIAL**

BY THE END OF THIS DECADE



In 2017, WTCS, UW and WAICU received a grant from the Lumina Foundation to begin addressing this challenge.

The partners have agreed on the goal to increase the state's postsecondary attainment rate to 60 percent by 2027 – **60 Forward.**

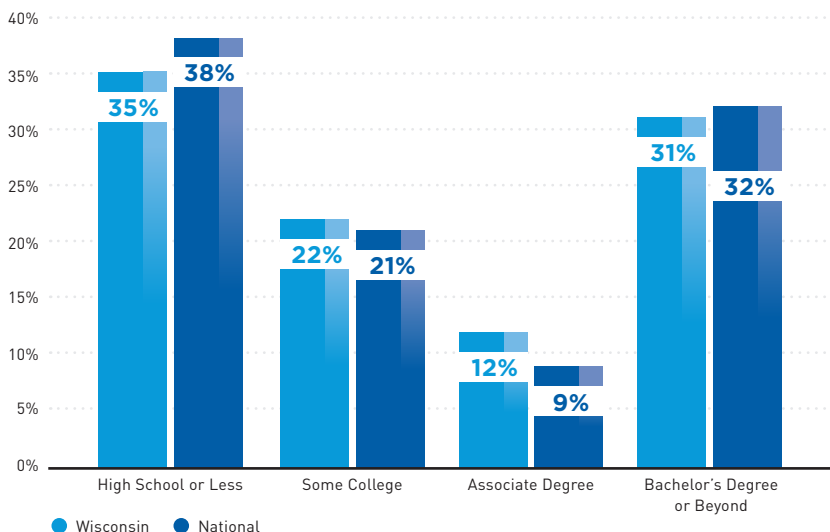




How Wisconsin Compares to the Nation

Educational attainment in Wisconsin exceeds the national average, but work remains before it reaches 60 percent.

Wisconsin has a larger share of people with associate degrees compared to the nation as a whole.

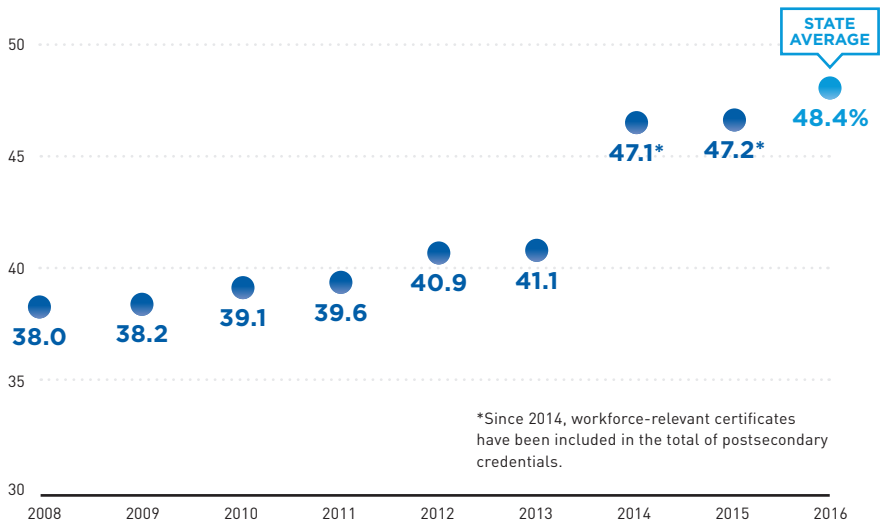


Source: CEW analysis of ACS 2015 25-64 population



Wisconsin's Progress

To reach state goals, the state will not only have to maintain current rates of attainment, but also significantly increase the number of people who enroll in programs and earn credentials beyond high school. **Wisconsin's overall rate of educational attainment has increased by 10.4 percentage points since 2008.**



Source: Lumina Foundation, A Stronger Nation, 2018 Wisconsin Report

About

LUMINA FOUNDATION

Lumina Foundation is an independent, private foundation in Indianapolis that is committed to making opportunities for learning beyond high school available to all. We envision a system that is easy to navigate, delivers fair results, and meets the nation's need for talent through a broad range of credentials. Our goal is to prepare people for informed citizenship and for success in a global economy.



WTCS

The Wisconsin Technical College System (WTCS) offers more than 500 programs awarding two-year associate degrees, one- and two-year technical diplomas, and short-term technical diplomas and certificates. In addition, the System is the major provider of customized business solutions and technical assistance to Wisconsin employers. Well over 300,000 individuals access the technical colleges each year.



WAICU

The Wisconsin Association of Independent Colleges and Universities (WAICU) is the official organization of the 24 independent (or private) institutions of higher learning in Wisconsin. Membership is limited to accredited, nonprofit institutions, headquartered in Wisconsin. WAICU members collectively enroll nearly 55,000 students and graduate almost 14,000 each year. WAICU members offer over 420 academic programs and produce 24 percent of all the bachelor's degrees and 35 percent of all the advanced degrees awarded in the state. WAICU's mission is: "Working together for educational opportunity."



UW SYSTEM

The University of Wisconsin (UW) System is one of the largest systems of public higher education in the country, serving more than 170,000 students each year and employing approximately 39,000 faculty and staff statewide.

The System includes 13 four-year universities, 13 freshman-sophomore UW Colleges campuses, and statewide UW-Extension. Together, these institutions are a tremendous academic, cultural, and economic resource for Wisconsin, the nation, and the world.

